



# ABUSIVE BEHAVIOUR CAN LEAVE GAPS.

Currently our services are extremely busy; we know it's frustrating. Unfortunately, verbal and physical abuse towards our colleagues can contribute to us losing staff, leaving gaps and making it harder to run our services.



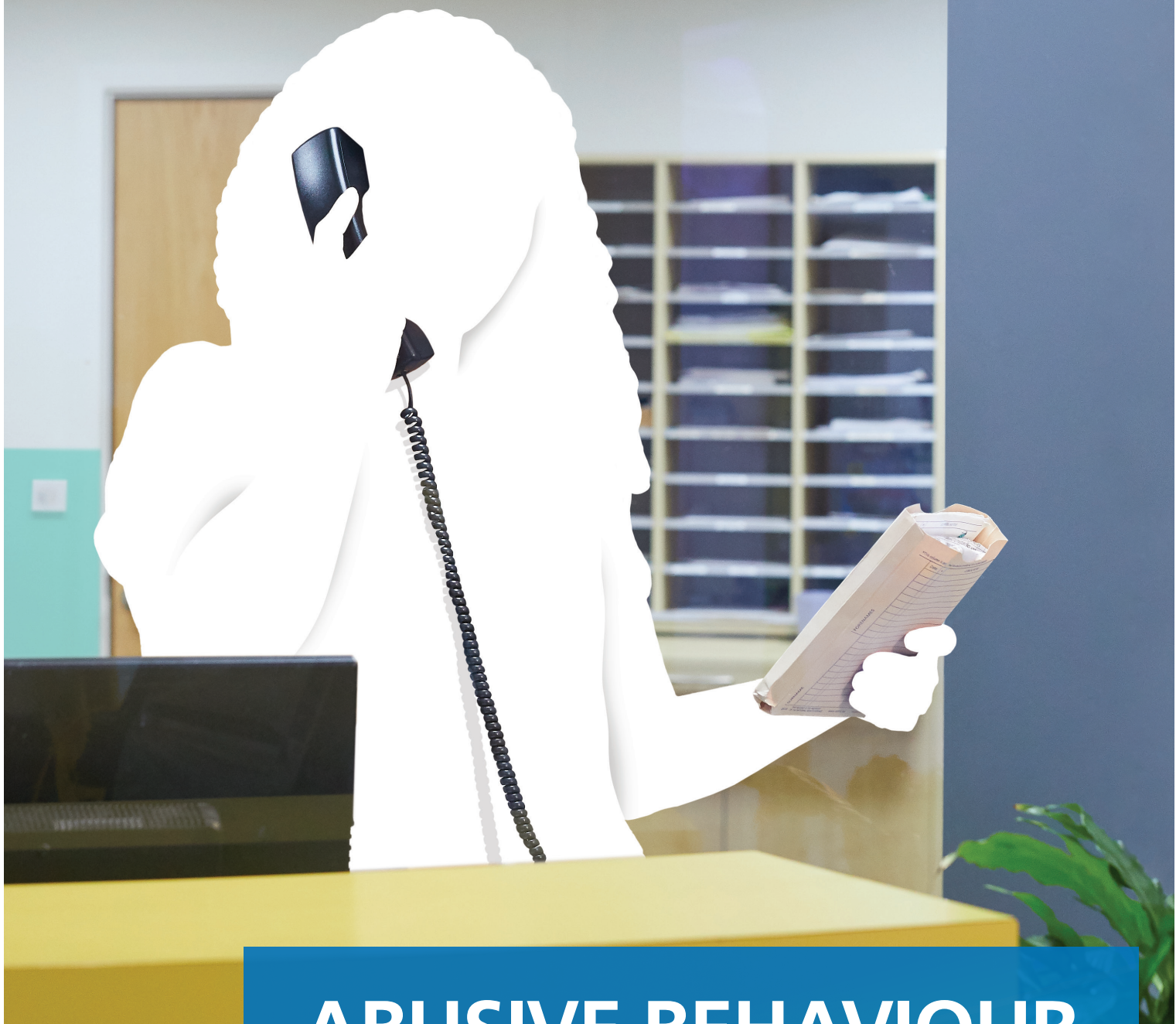


# ABUSIVE BEHAVIOUR CAN LEAVE GAPS.

Currently our services are extremely busy; we know it's frustrating. Unfortunately, verbal and physical abuse towards our colleagues can contribute to us losing staff, leaving gaps and making it harder to run our services.







# ABUSIVE BEHAVIOUR CAN LEAVE GAPS.

Currently our services are extremely busy; we know it's frustrating. Unfortunately, verbal and physical abuse towards our colleagues can contribute to us losing staff, leaving gaps and making it harder to run our services.

