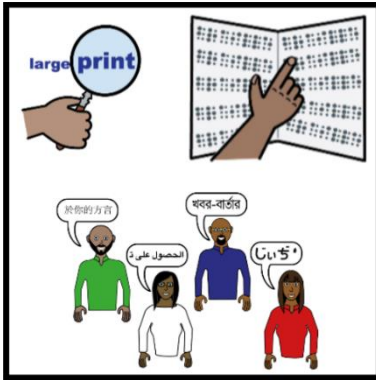


Easy Read

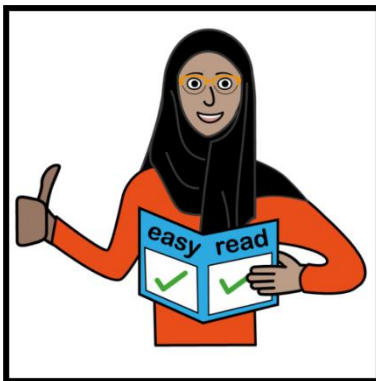
# How to use GTN Spray

Information leaflet





If you require this information in other languages, Braille, large print, or audio format please contact the team looking after you.



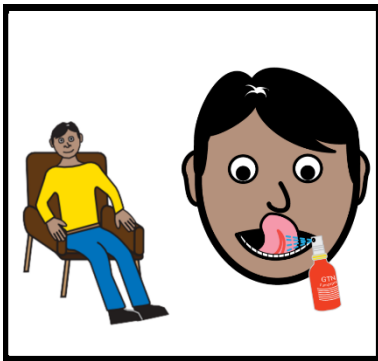
This booklet uses easy words and pictures.  
You might want to ask someone to help you read it.

## What is GTN spray?

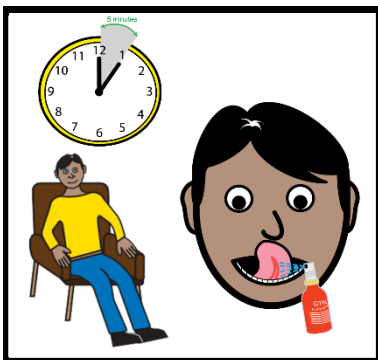


GTN is a spray medicine you might be given to help with chest pain.  
Not everyone has this.

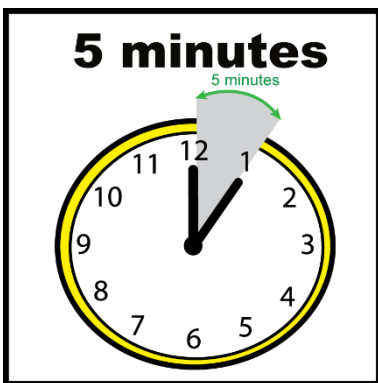
## How to use your GTN spray.



If you get pain in your chest, sit down and spray your GTN under your tongue.  
It must be under your tongue.



If you still have chest pain after 5 minutes, stay sat down and have another spray under your tongue.



Wait another 5 minutes.



If you still have chest pain, call 999.



## Service Contact Information

If you need to speak to someone about this leaflet, you can:

**Service Name:**

**Call:**

**Email:**



If you want to give feedback to someone outside the service, you can speak to the **Patient Experience Team**.

**Call** 0113 220 8585

**Email** [lch.pet@nhs.net](mailto:lch.pet@nhs.net)



We might ask you a few questions and keep a record of your personal details.

We may share your information with other services. We will ask you before we do this, as per the Data Protection Act 1998.